

# BANK NIFTY

22 October 2024

## About Index

The Nifty Bank Index comprises of the most liquid and large Indian Banking stocks. It provides investors and market intermediaries a benchmark that captures the capital market performance of the Indian banks. The Index comprises of maximum 12 companies listed on National Stock Exchange of India (NSE). Nifty Bank Index is computed using free float market capitalization method. Nifty Bank Index can be used for a variety of purposes such as benchmarking fund portfolios, launching of index funds, ETFs and structured products.

## Portfolio Characteristics

METHODOLOGY	Periodic Capped Free Float
NO OF CONSITUENTS	12
LAUNCH DATE	SEP 15,2003
BASE DATE	JANUARY 1,2000
BASE VALUE	1000
CALCULATION FREQUENCY	REAL TIME
INDEX REBALANCING	SEMI- ANNUALLY

## Top constituents by weightage:

HDFC BANK LTD	27.58
ICICI BANK LTD	24.06%
STATE BANK OF INDIA	10.54%
KOTAK MAHINDRA	10.32%
AXIS BANK LTD	9.33%
INDUSIND BANK	5.46%
FEDERAL BANK	2.76%
BANK OF BARODA	2.73%
PUNJAB NATIONAL BANK	2.13%
AU SMALL FINANCE	2.08%

## Fundamentals

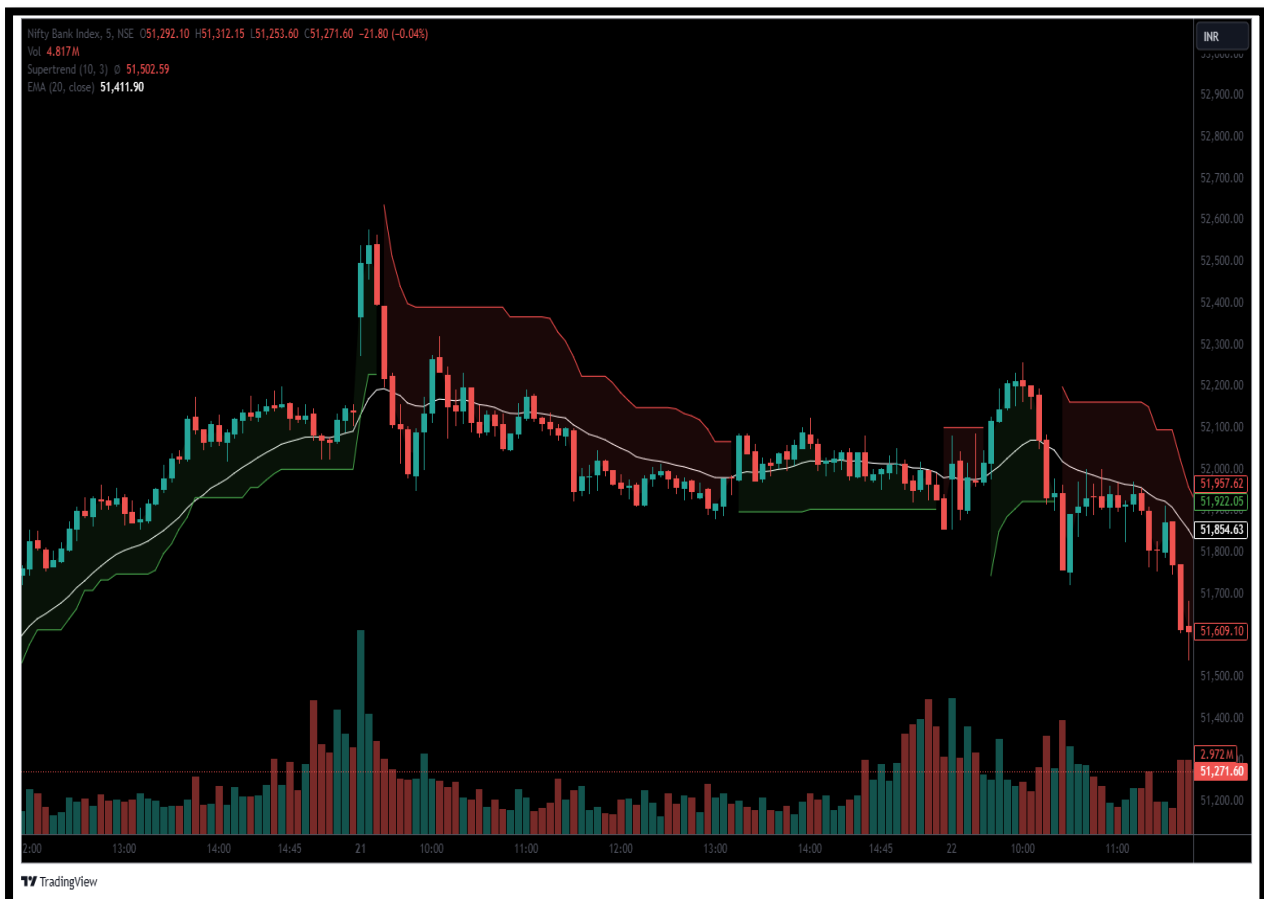
P/E RATIO	15.01
P/B RATIO	2.86
DIVIDND YIELD	0.88%

## Our recommendation

**OPTIONS INSIGHT- BUY BANKNIFTY 51700 PUT ABOVE 260 TARGET 360/460 SL BELOW 200**

## Technical analysis

The Nifty Bank Index continues to in pressure. Prices are trading below its 20 EMA level which indicate bearish trend in 5 mints time frame. Supertrend is confirming the bearish trend in it. Thus, we recommended buying BANK NIFTY 51700 Put Option.



## **Disclaimer**

I, Ruchi Nahar, SEBI Registered Research Analyst (INH000014544) comply with the qualification and certification requirements under SEBI (Research Analyst) Regulations, 2014. I have qualified CA, CS and MBA, has over 11 years of experience in MNCs, culminating as Head of Finance. I now leverage my expertise to guide stock market investors with strategic insights. All of the views expressed in research reports and recommendations issued by me reflect my personal views about the Subject Company or companies at the given point of time and I do not receive/accept any kind of compensation, directly or indirectly related to specific recommendations or views expressed in reports issued by me. I/my relatives do not at any point of time of issuing the reports have any material conflict of interest in the subject company neither I was/am/will be engaged in market making activity for the subject company. The investments discussed or views expressed in reports and recommendations issued by me may not be suitable for all investors. The user assumes the entire risk of any use made of this information. I nor any person connected with my report, accepts any liability arising from the use of research document. The recipients of research document should rely on their own investigations and should consult their own financial advisors to determine merit and risks of such investments based on their own risk appetite. Price and value of the investments referred to in this material may go up or down. Past performance is not a guide for future performance. Certain transactions including those involving futures, options and other derivatives as well as non-investment grade securities involve substantial risk and are not suitable for all investors. Reports and recommendations based on technical analysis centres on studying charts of a stock's price movement and trading volume, as opposed to focusing on a company's fundamentals and as such, may not match with a report on a company's fundamentals. Opinions expressed in research reports & recommendations will be based on the current opinions as of the date appearing in research report & recommendations. While I endeavour to update on a reasonable basis the information discussed in research reports, there may be regulatory, compliance, or other reasons that prevent me from doing so. Prospective investors and others are cautioned that any forward-looking statements are not predictions and may be subject to change without notice. So far as reports include current or historic information, it is believed to be reliable, although its accuracy and completeness cannot be guaranteed. Investment in securities market is subject to market risks. Read all the related documents carefully before investing. Registration granted by SEBI, and certification from NISM in no way guarantee performance of the intermediary or provide any assurance of returns to investors.